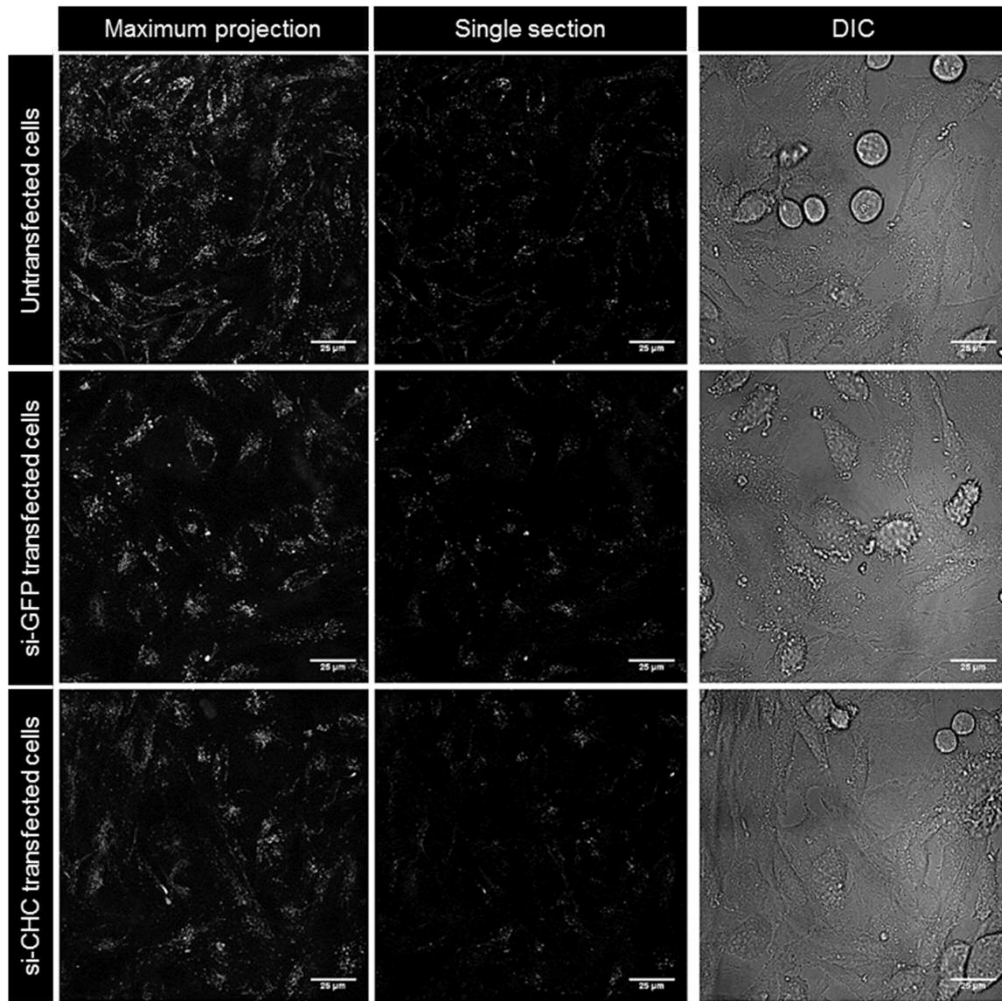
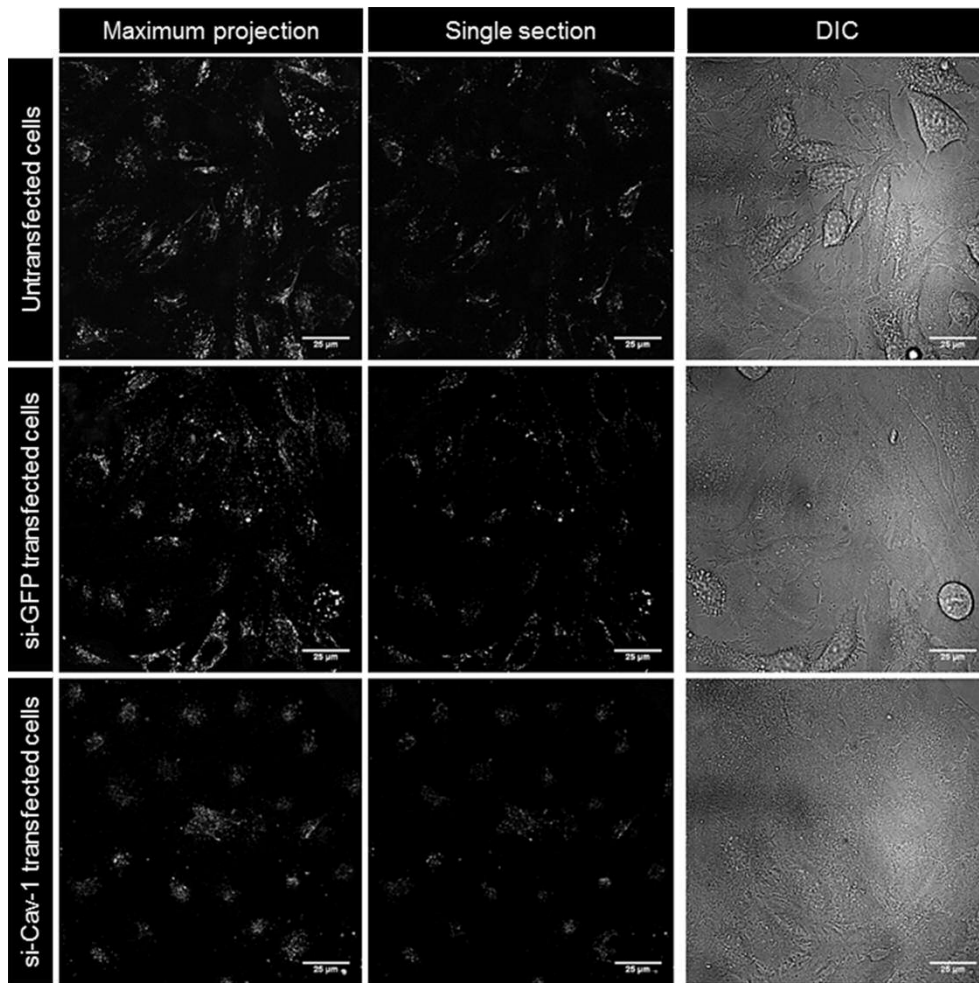


**Supplementary Figures**



Supplementary Figure 1. Effect of CME inhibition on cellular uptake of the nanogel. Live cell confocal fluorescence microscopy images of the HeLa cells transfected with si-CHC treated with nanogels for 7 h. Each row, from left to the right, represent maximum projection, Z section and DIC images.



Supplementary Figure 2. Effect of si-Cav-1 depletion on cellular uptake of the nanogel. Live cell confocal microscopy observation of the Alexa488-nanogels incubated with si-Cav-1 transfected cells for 7 h. Each row, from left to the right, represent maximum projection, Z section and DIC images.