

**Corrigendum: Identification of the pollen self-incompatibility determinant in *Papaver rhoeas***

[Wheeler MJ](#), [de Graaf BH](#), [Hadjiosif N](#), [Perry RM](#), [Poulter NS](#), [Osman K](#), [Vatovec S](#), [Harper A](#), [Franklin FC](#), [Franklin-Tong VE](#).

**Nature 459:** 992-995 (2009) doi:10.1038/nature08027

Recently, it has come to our attention that in the left panel of **Fig. 2b** of this Letter, the lanes labelled  $S_2S_4$  and  $S_6S_{17}$  were duplicated. We have reviewed the original data. It seems likely that a duplicated part of the blot was placed over  $S_6S_{17}$  to aid alignment of molecular weight markers and inadvertently left there. We have now removed the duplicated lane and show the whole western blot (Fig. 1). Our conclusions are unaffected.

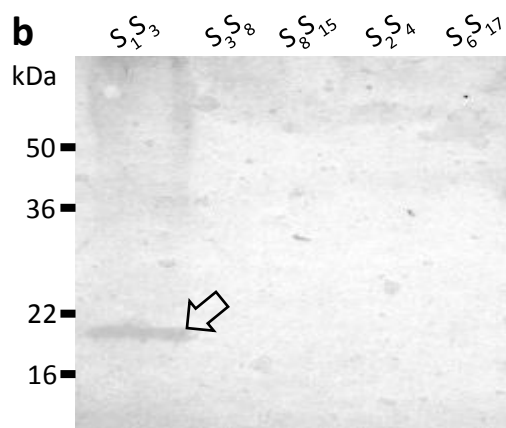


Figure 1. **This is the corrected left panel of Fig. 2b.** The right panel showing the Coomassie staining is not shown.